



HAWKEYE[™]
RADAR EVOLVED

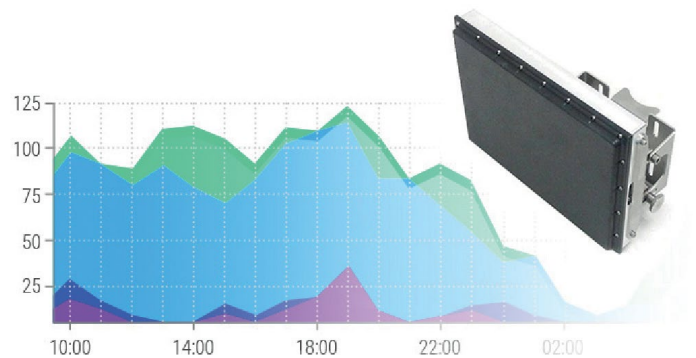
AUTOMATED SIGNAL PERFORMANCE MEASURES
USING HD RADAR TECHNOLOGY



About Hawkeye ASPM

HAWKEYE Automated Signal Performance Measures (ASPM) is a comprehensive solution for collecting and visualizing high-resolution data. This data helps traffic professionals manage traffic signals efficiently and proactively. The application is cost-effective and permits continuous monitoring of intersections using the highly accurate 3D-UHD radar technology without the need to add additional detectors.

The Hawkeye radar technology delivers nearly 100% vehicle detection accuracy while introducing a new universe of data granularity through a powerful reporting and visualization module. The Hawkeye ASPM features delay and advanced queue reporting, vehicle speeds, volume and other relevant metrics that help traffic practitioners in providing a safer and improved travel experience to motorists.



Hawkeye Radar Detection Highlights

- Detection range: up to 1,000 ft
- 24+ Adaptive beam formation
- Unaffected by weather
- Real-time data analytics
- HYPER-Accurate vehicle count
- HYPER-Accurate speed counter

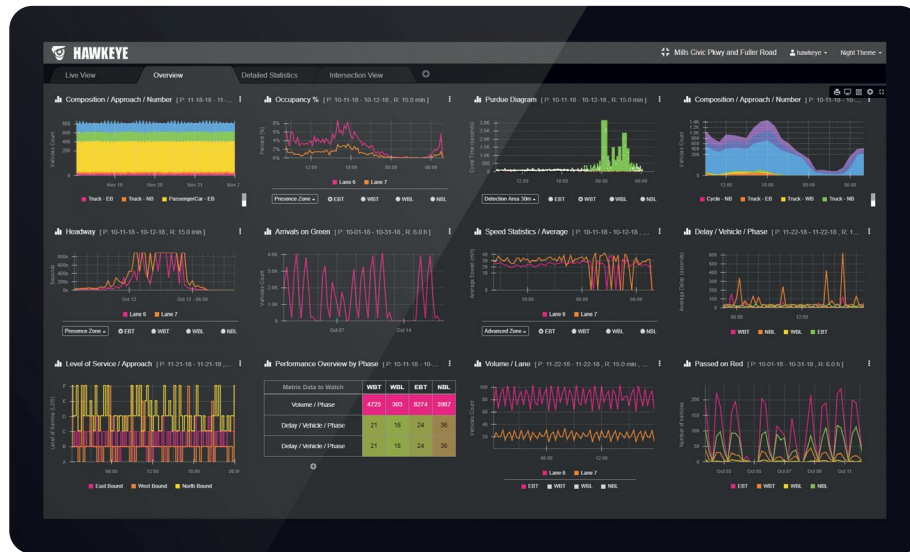
Visualization Highlights

- Intersection live view
- Vehicle classification
- Continuous vehicle tracking
- Data per lane/phase/approach
- Dilemma zone analysis
- Stop bar, Presence and Advanced zone stats
- Dashboard of charts

The data visualization can serve as a mini traffic management center on your laptop. The statistics are HCM compliant and benchmarked to traffic management industry standards. This eliminates the need for manual report generation.

Hawkeye ASPM Intelligence Module

The ASPM data intelligence module gives traffic professionals the power to efficiently observe travel patterns, bottlenecks and other traffic issues. The data capture rate has a very high resolution. The data feed is processed instantaneously, enabling traffic engineers to analyze and optimize traffic signals in real-time and make their transportation infrastructure safer and more efficient.



Hawkeye ASPM brings rich data to life!

Hawkeye **Automated Signal Performance Measures** module provides advanced data visualization per lane, movement, phase, approach or per intersection for the following metrics:

ARRIVALS

- Arrivals on Red/Green
- Purdue Coordination Diagram

DELAY AND LOS

- Delay/Vehicle/Phase
- Total Delay/Vehicle/Phase
- Level of Service/Approach
- Level of Service/Intersection

VOLUME

- Volume Approach/Lane/Phase
- Composition/Approach

OTHERS

- Average Speed
- Passed on Red
- Occupancy
- Headway

Hawkeye ASPM Benefits



Intersection live view with real-time streaming of traffic movements



Flexible multi-tab dashboard system



High-definition data on Presence and Advanced detection zones



Real-time and period-based data with enforcement credence

- ASPM included with every radar purchase
- Web-based interface accessible on any device, at any time
- Heat-map with alerts
- Local storage, no cloud plan required
- Fully customizable



14019 W 95th St
Lenexa KS 66215



913-674-9846



rhythmtraffic.com